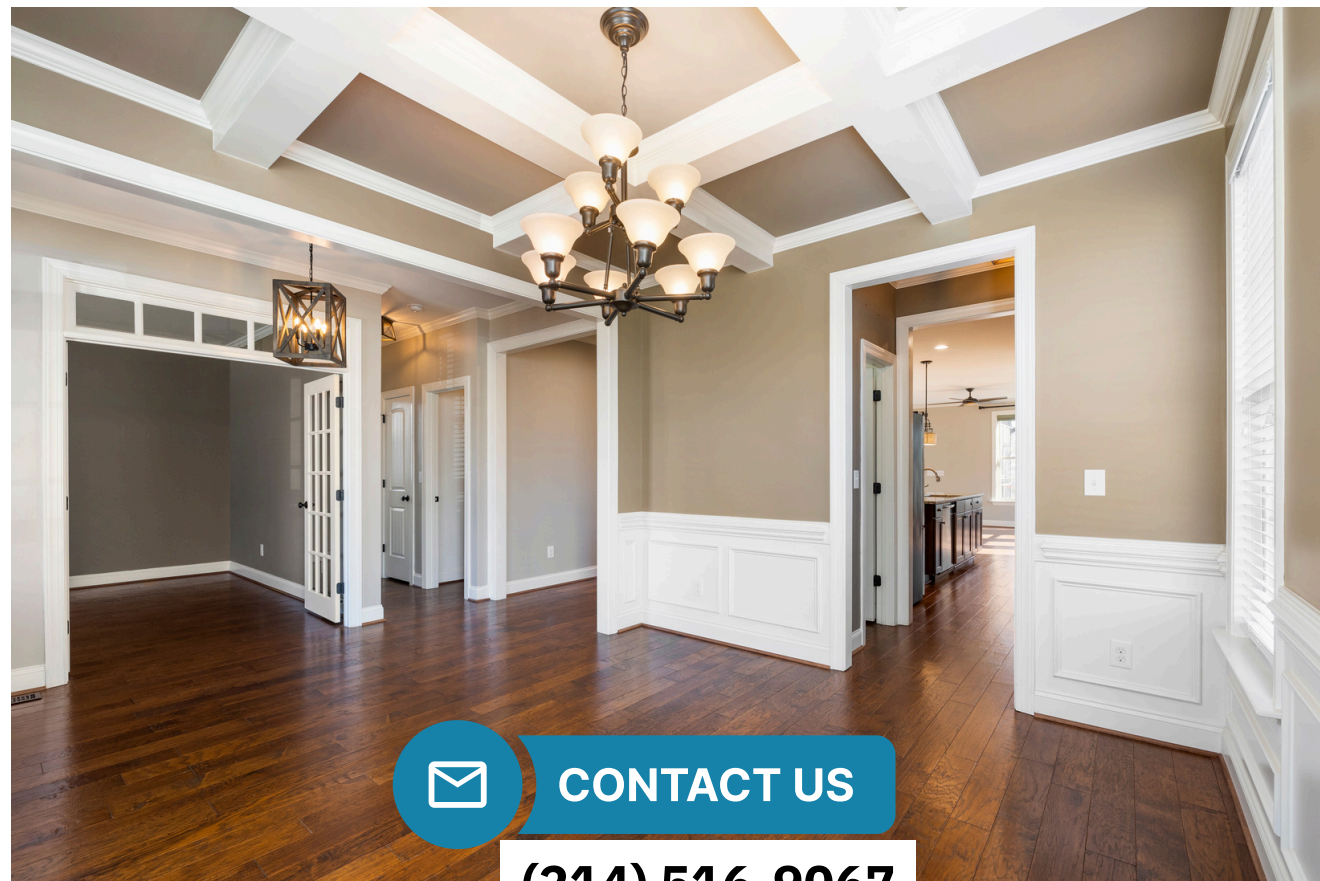




Empire Building

BUILD IT BETTER WITH EMPIRE

www.EmpireBuildingMaterial.com

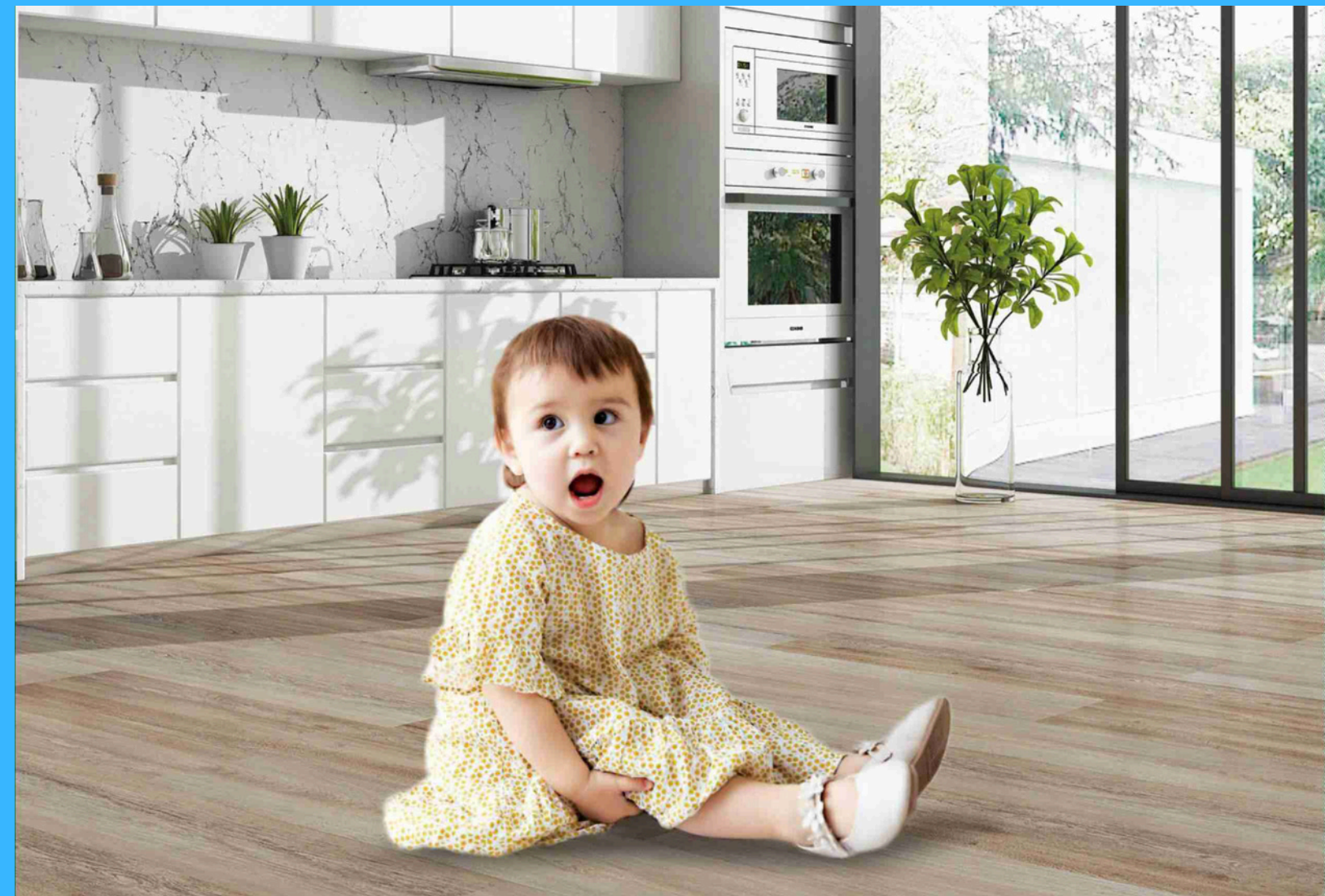


CONTACT US

(214) 516-9067



Bringing a world of construction products to you with exceptional quality, service, and pricing.

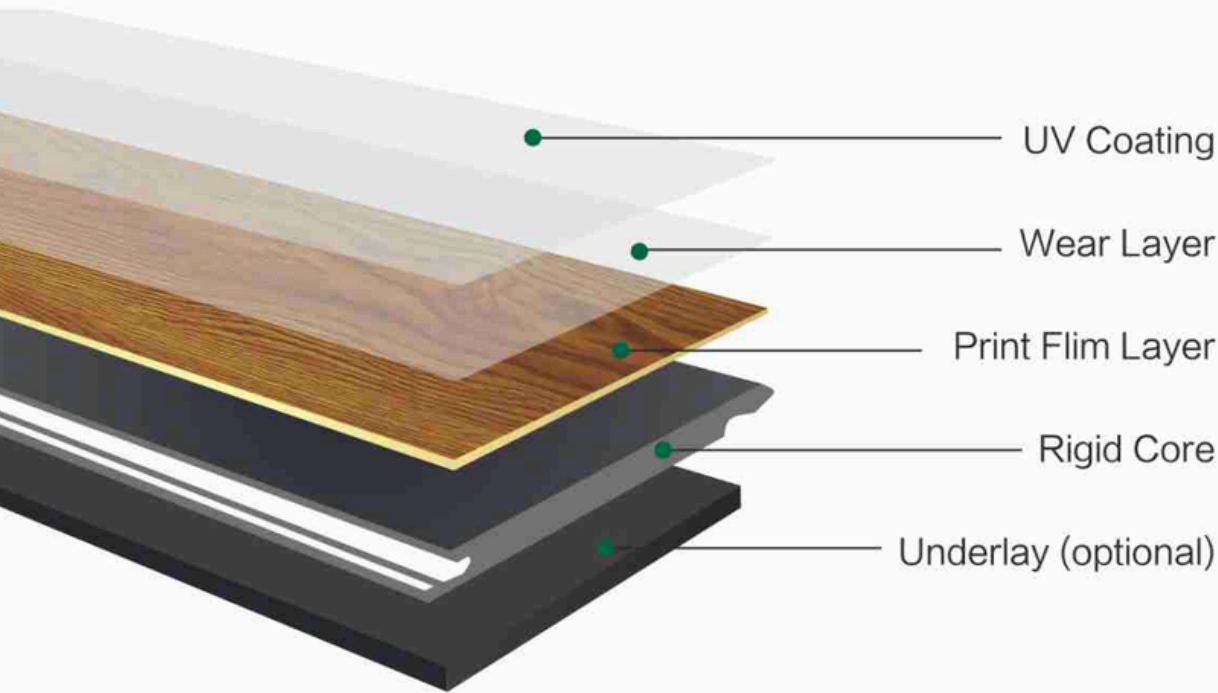


100% Waterproof

**Uniclick
Locking System**

**Stable, Durable
Scratch proof**

SPC Flooring Structure Diagram



About SPC

SPC Flooring - The latest generation of flooring

SPC (Stone Plastic Composite) flooring is more and more popular new style ecofriendly vinyl flooring. It is made from a combination of PVC powder, natural limestone powder and some stabilizers. Its main component PVC powder, is a kind of environmental protection non-toxic renewable resources, 100% free of formaldehyde, lead, benzene and other non-radiation heavy metals and carcinogens, so it is ideal for home and business areas. SPC flooring also has waterproof, fireproof, anti-slip, anti-termite, sound insulation, noise reduction, simple installation and so on.

Waterproof

Impact and compression resistant

Easy To Clean

ECO-friendly

10 YEAR Commercial

Quick-installation

Anti-static properties

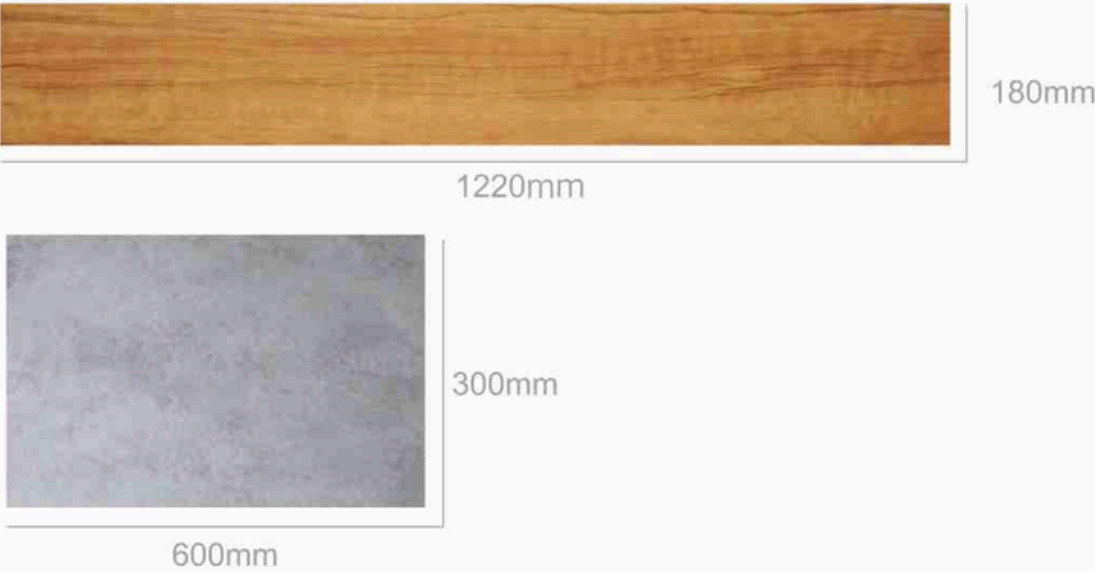
Fire retardant

Non-slip

20 YEAR Residential



Thickness	Wear Layer	IXPE(optional)	Plank Size	Weight m ²
4.0mm	0.3mm	1.5mm	1220mm × 180mm 300mm × 600mm	8kg
4.5mm	0.3mm			9kg
5.0mm	0.3mm			10kg
5.0mm	0.5mm			10kg
5.5mm	0.5mm			11kg
6.0mm	0.5mm			12kg



Certificate

TEST REPORT

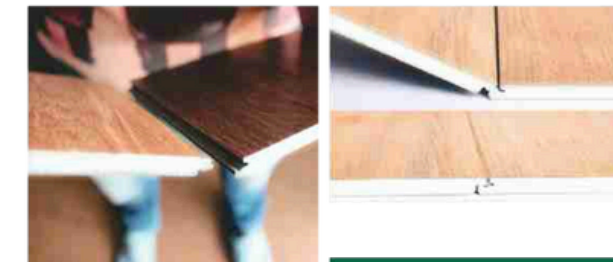
SGS

Summary of Results:

No.	Test Item	Test Method	Result	Conclusion
1	Appearance by observation	EN ISO 28467:2015 and EN 425:2002	Index 2	✓
2	Color stain test	EN 425:2002	See result	✓
3	Water per unit area	EN ISO 24647:2012	Water proof	✓
4	Heat resistance	EN ISO 24647:2012	See result	✓
5	Resistance to impact	EN ISO 13359:2012	See result	✓
6	Dimensional stability and swelling after exposure to heat	EN ISO 13359:2012	See result	✓
7	Flammability	EN ISO 13359:2012	See result	✓
8	Density	EN ISO 13359:2012	See result	✓
9	Heat resistance	EN ISO 13359:2012	See result	✓
10	Thermal conductivity	EN ISO 13359:2012	See result	✓
11	Resistance to oxidation and burning	EN ISO 13359:2012	See result	✓
12	Locking strength	EN ISO 13359:2012	See result	✓
13	Static Coefficient of Friction	EN ISO 13359:2012	See result	✓
14	Effect of Temperature Humidity of a Portable Log	EN ISO 13359:2012	See result	✓
15	Dynamic Coefficient of Friction	EN ISO 13359:2012	See result	✓
16	Static resistance	EN ISO 13359:2012	See result	✓
17	Static Coefficient of Friction	EN ISO 13359:2012	See result	✓
18	Clear Dimension	EN ISO 13359:2012	See result	✓

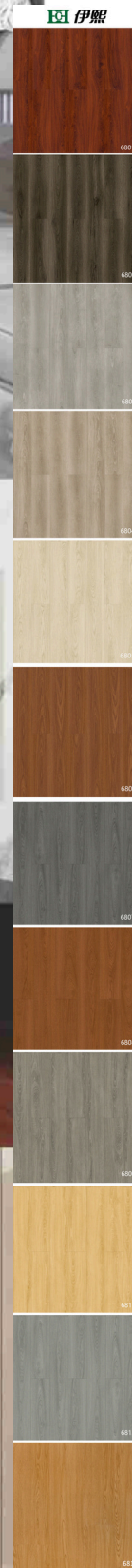
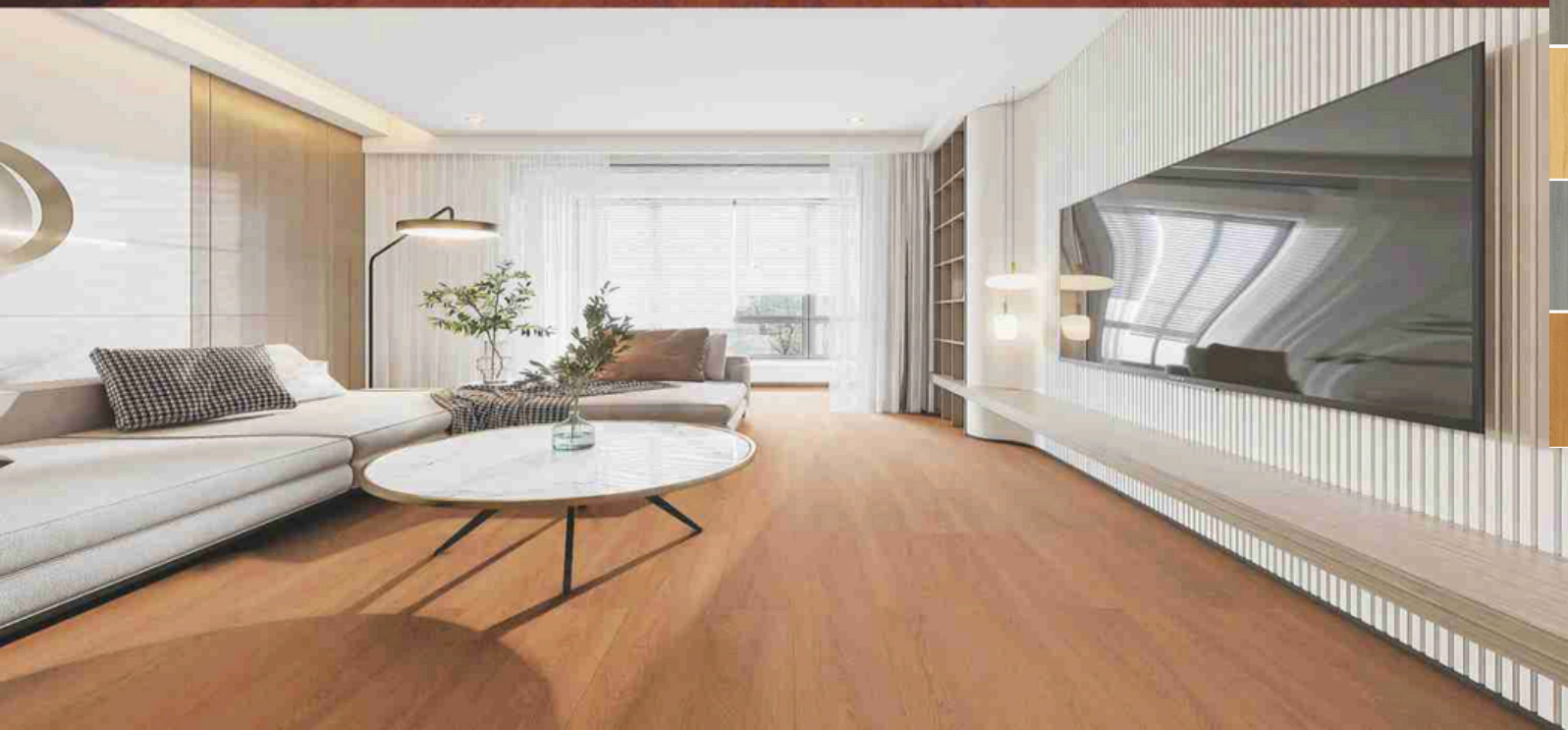
Lock technology / SPC

Thanks to Unilin's Uniclic locking system, installation is much easier and quicker saving your time and money. Our SPC flooring planks click together seamlessly without glue, cement or any other adhesive material. Tight and even interlocking technology, avoids damage of edges and corners. One of the main advantages of Unilin locking system, there is no water seepage, making this flooring 100% waterproof.

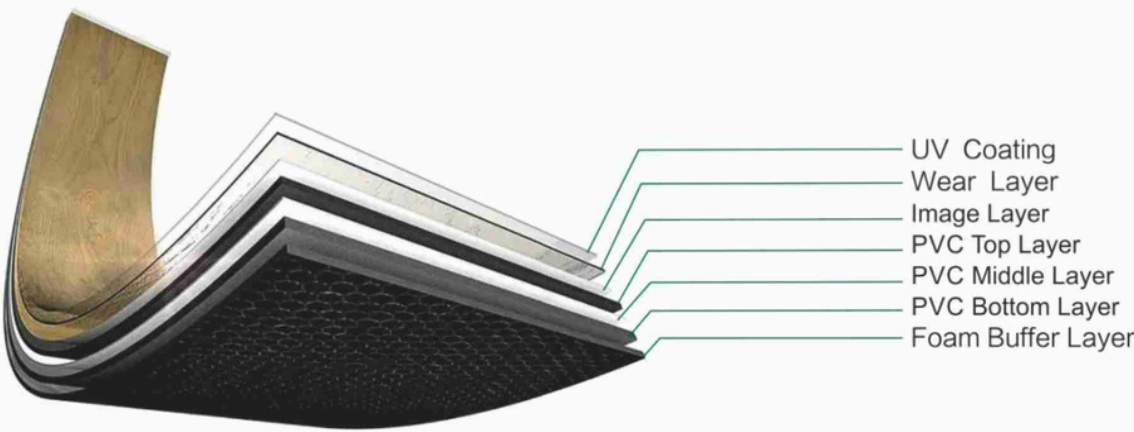


- Unilin Uniclic locking technology.
- Clicks together easily.
- No glue or adhesives.
- Can be installed on top of any smooth, solid surface.

Production process

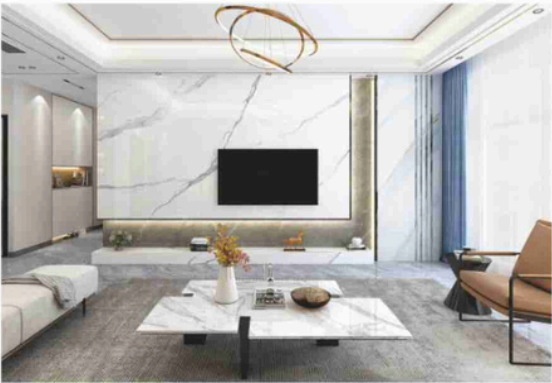


LVT Flooring Structure Diagram



About LVT

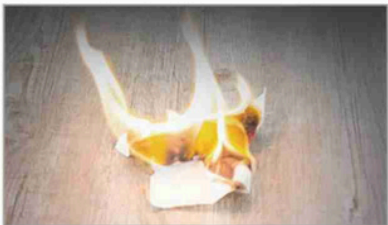
LVT (Luxury Vinyl Tiles) flooring is a kind of PVC flooring, which belongs to semi-rigid sheet plastic elastic flooring. It made of the natural marble powder to form solid high-density and high-fiber net basic layer, and also is covered with super strong polymer PVC wear layer.



Product name	LVT Flooring
Design	Wood grain, Stone grain and Carpet grain
Thickness	1.5mm – 3.0mm
Wear layer	0.07mm – 0.5mm
Size	152.4*914.4mm, 304.8*304.8mm, 457.2*457.2mm or Customized
Back	Dry back and Self Adhesive
Feature	Anti-slip, Waterproof, Scratch resistance, Fireproof
Usage	Indoor Residencial, Commercial Occasion
Package	Carton and Pallet

LVT advantages

The advantages of LVT flooring are: cheap price, environmental protection, wear-resistant, elastic good impact resistance, waterproof and flame retardant, waterproof and moisture-proof, easy maintenance. This kind of floor is often laid in schools, kindergartens, play rooms, in the family children's room is also used.



DRY BACK

NEED GLUE COST-EFFECTIVE

Dry Back means the back of floor is dry and plain. Meanwhile there is no click system on the edge. Clients need to brush glue on the back for installation.

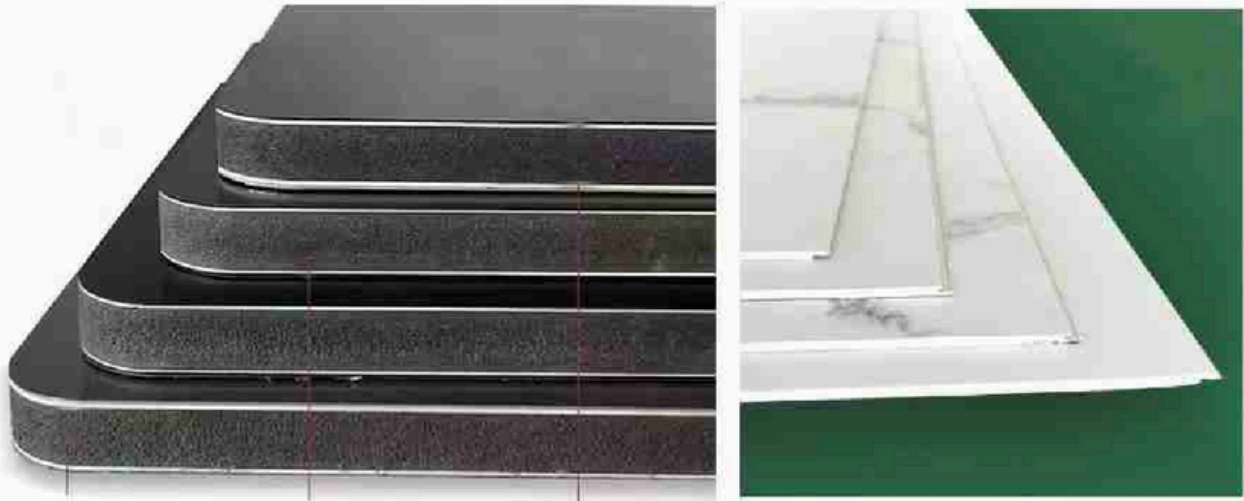


SELF ADHESIVE

DIY EASY INSTALLATION

Self Adhesive means we already brush glue on the back of floor by machine. Clients only need to peel off the protective-paper for installation.

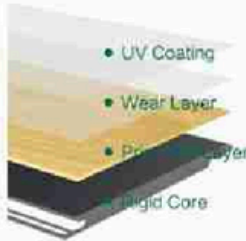
WPC / SPC Wall panel



Wpc

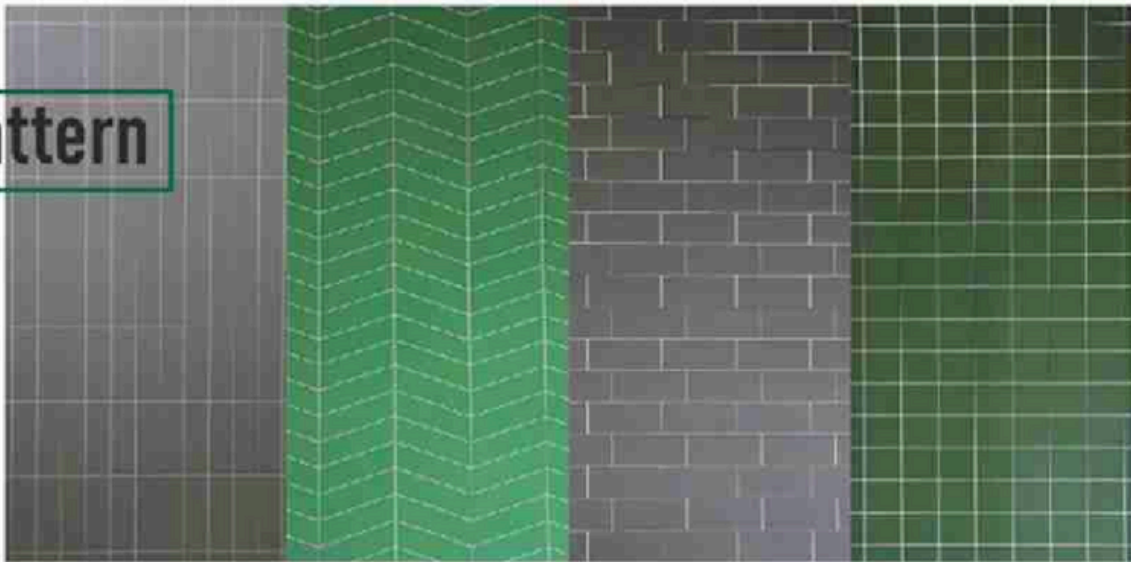
- ****Durability****: Solid and strong construction, resistant to deformation.
- ****Surface Protection****: Diamond layers on the surface and bottom for anti-collision properties and extended lifespan.
- ****Material Composition****: Made of 100% new PVC resin, bamboo charcoal powder, and wood powder, pressed under high temperatures for high hardness and durability.
- ****Additional Features****: Natural texture, flame retardant, waterproof, moisture-proof, and resistant to fading.

SPC



Product name	SPC wall panel
Material	PVC + Calcium powder
Design	Wooden texture, Stone texture,Carve pattern
Thickness	3.5mm – 5.0mm
Size	300*2600mm, 470*2600mm or Customized
Feature	Waterproof, Fireproof, Scratch resistance
Usage	Entertainment, Commerce, Household
Installation	Unity click with glue

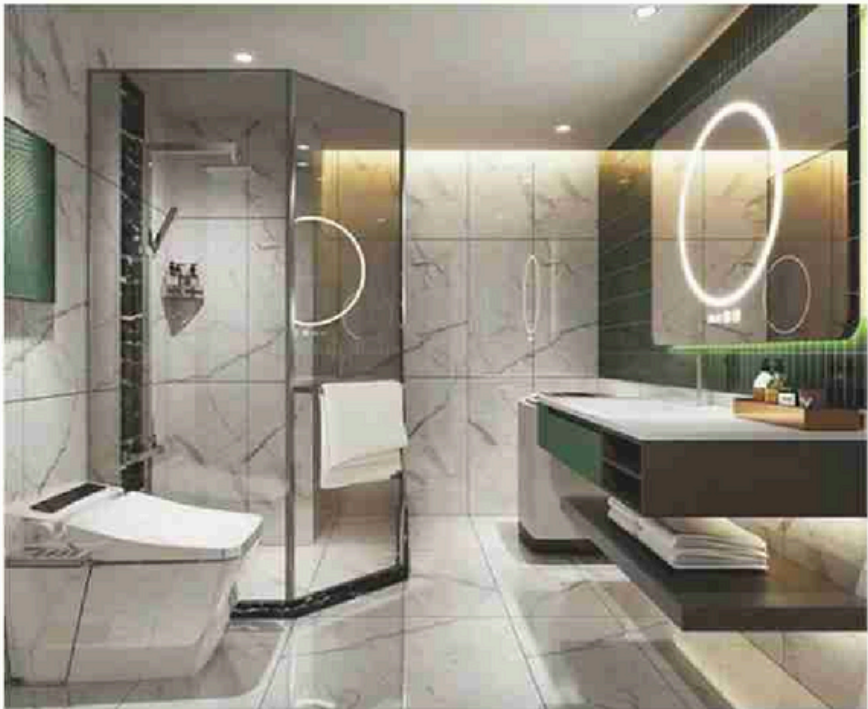
Carve pattern



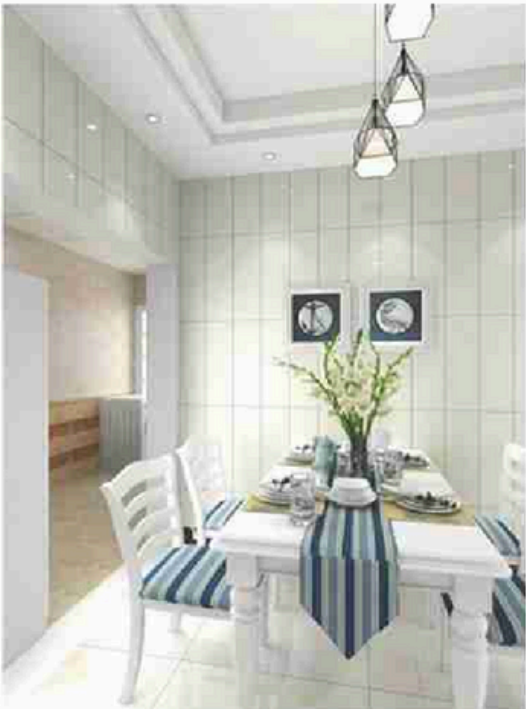
- Wood pattern



- Carve Pattern

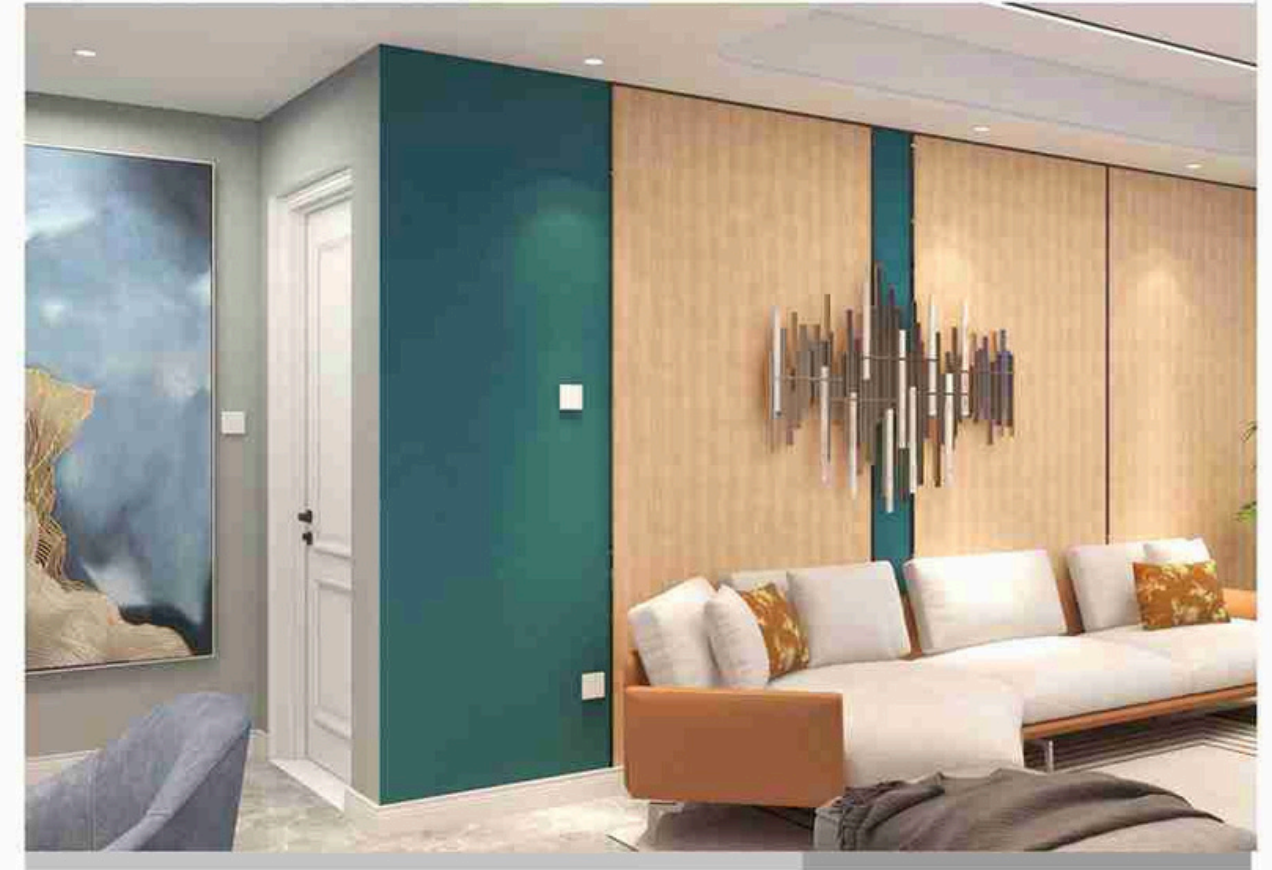


- Stone pattern



- Carve Pattern

WPC / SPC Wall panel



WPC / SPC Wall panel



Width : 600mm 1200mm
Length: 2000mm-5000mm

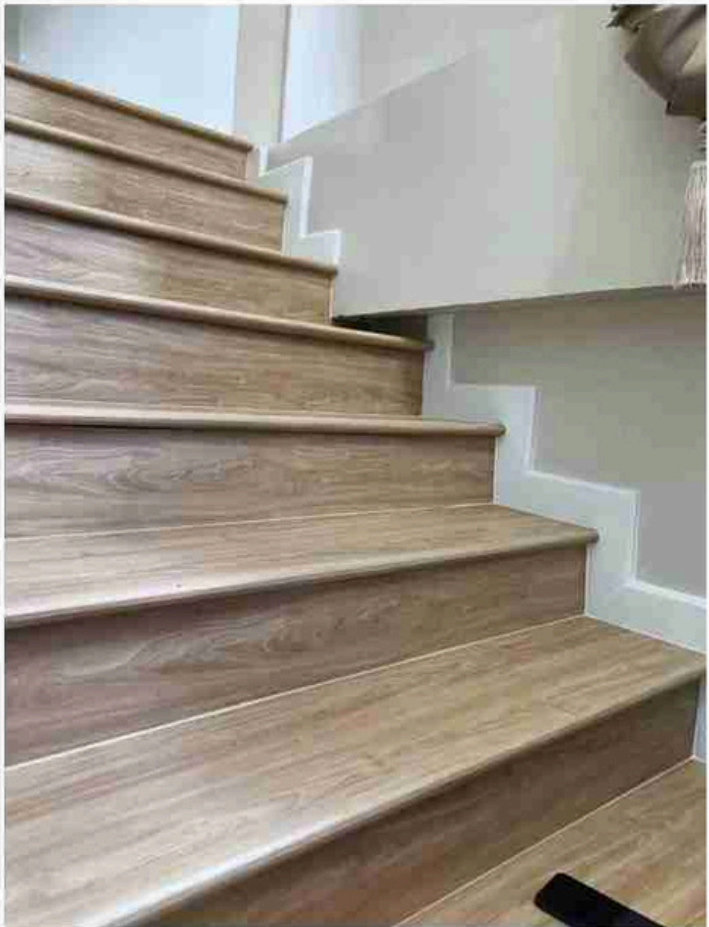
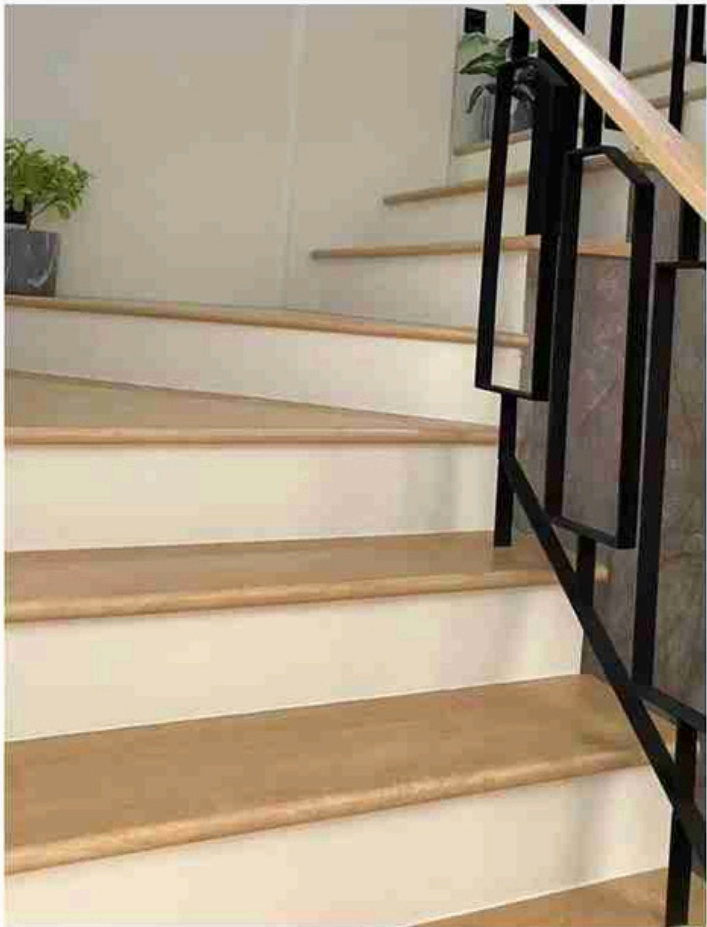


(214) 516-9067

www.EmpireBuildingMaterial.com

SPC Stair Treads

Width: 250mm-400mm
Length: 900mm-2200mm
Thickness: 20mm-25mm





Empire Building

BUILD IT BETTER WITH EMPIRE

2628 Myrtle Springs Avenue - Dallas, Texas 75220

(214) 516-9067

www.EmpireBuildingMaterial.com